

## Installation Of XILS3-LE into a Receptor 2 Pro (Muse Research)

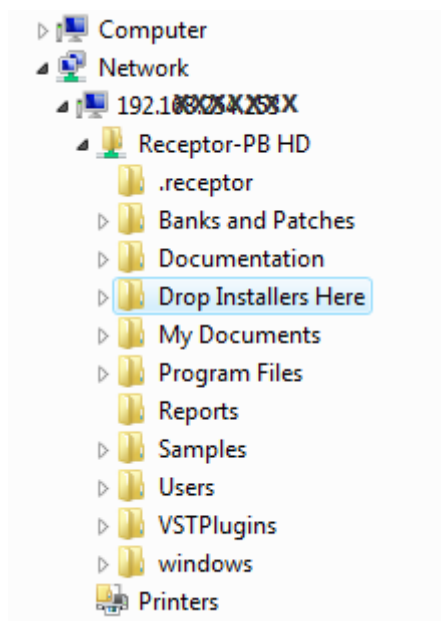
By Paul Barret

1. Reboot Receptor, if it is already powered up. If there are any plug-ins loaded, unload them.

*A quick way to do this is by loading a “Blank Multi”, (or a “Blank Patch”, if there is only one channel loaded).*

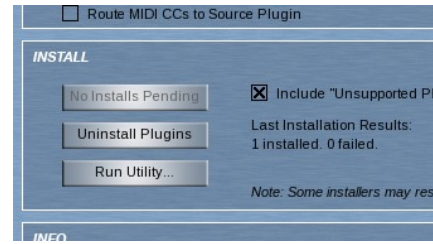
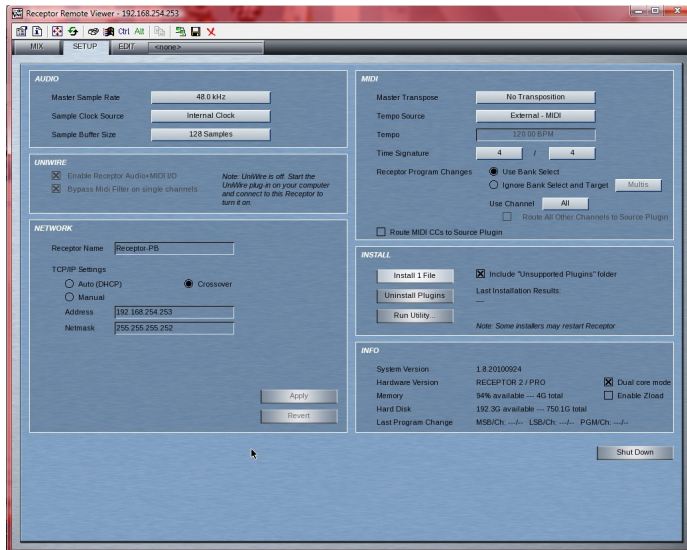
2. Copy the <xils3\_limited\_win\_setup.exe> into the Windows clipboard on your PC, by right-clicking on the file.
3. Open the Receptor Remote Control program, and select the option “Receptor Drive”
4. Locate the folder called “Drop Installers Here”. This is typically found on a second level of the Receptor hard drive.

[\[\\###.###.###.###\Receptor-XX HD\Drop Installers Here}](#)

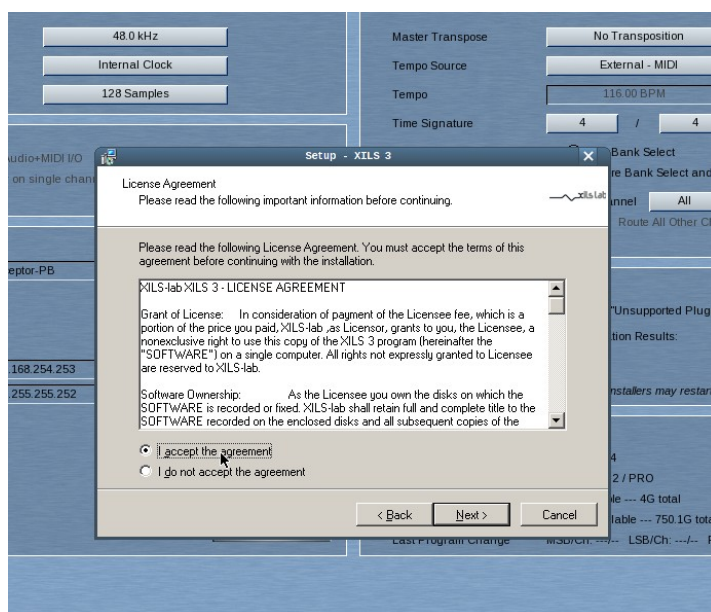


5. Paste the .exe file to this folder, by right-clicking over the “Drop Installers Here” folder icon, and clicking “Paste”.
6. Go back to the Receptor Remote Control program, and select “Receptor Viewer”. A screen view of the Receptor should appear. Click on the “Setup” button, just to the right of the top left-hand button marked “Mix”. On the install section on the middle-right, you should see the words “Install 1 File”

in the top dialogue box. If not, please ensure that the “Include “Unsupported Plugins”” folder” option is “X”-ed.

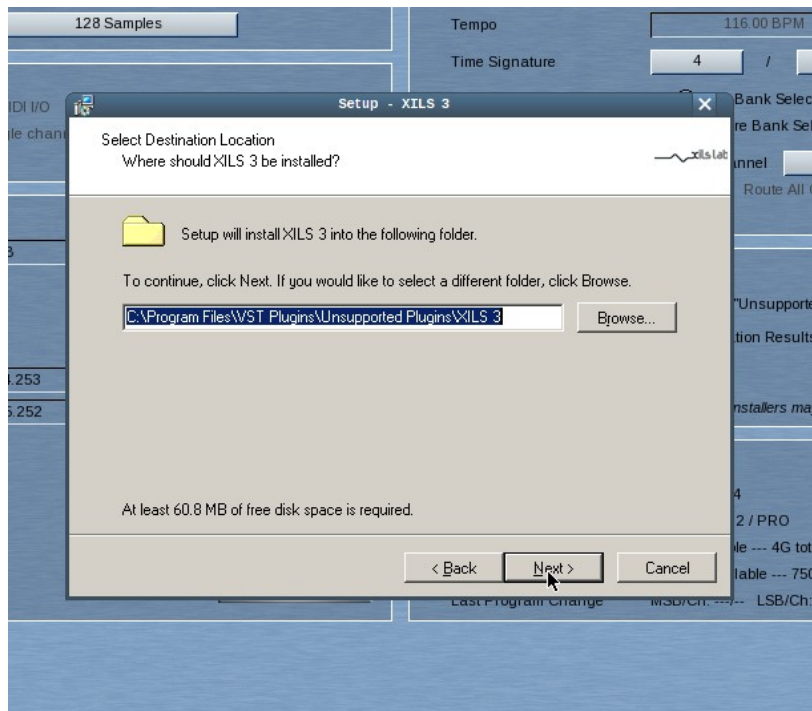


7. Click on this “Install 1 File” button.
8. A standard windows setup dialogue should appear in the Receptor Remote Viewer, advising you to close all other programs, etc. As you have already unloaded any virtual instruments or FX in step 1, you are now able to activate the setup, by clicking on “Next”.
9. Accept the terms of the license agreement, by clicking the radio box, and click “Next”.

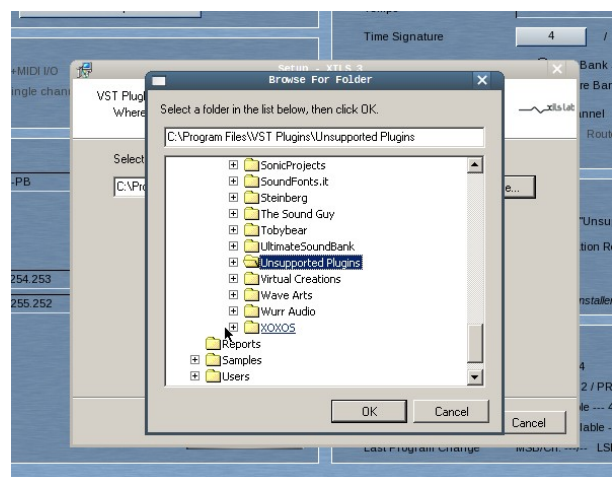
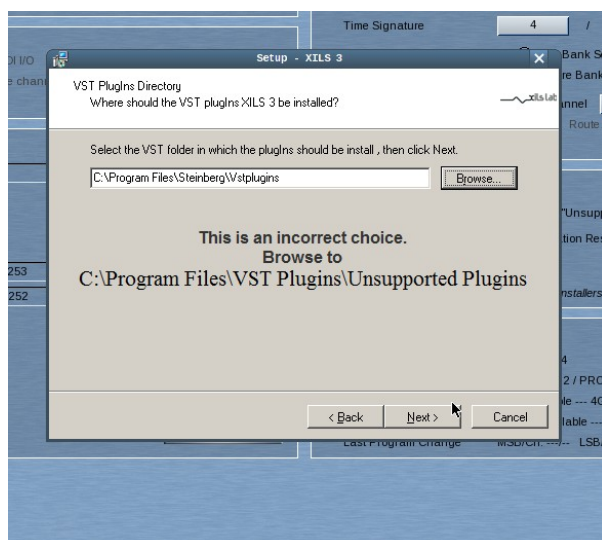


10. The next dialogue box contains the **correct** location for the files, so please do not place the files in any other folder. Accept this location by clicking

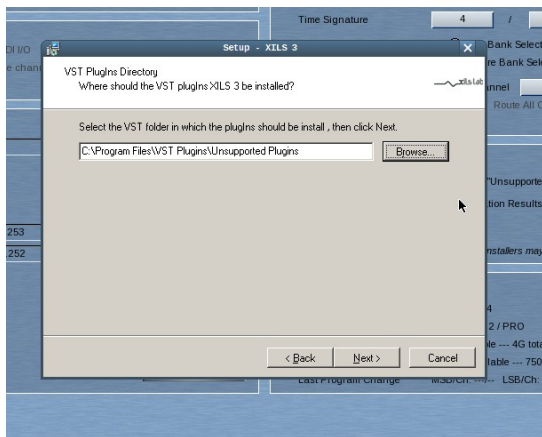
“Next”.



11. However, the default location for the VST plugins in **incorrect**, so you need to browse to **this** location: C:\Program Files\VST Plugins\Unsupported Plugins. Click Next.

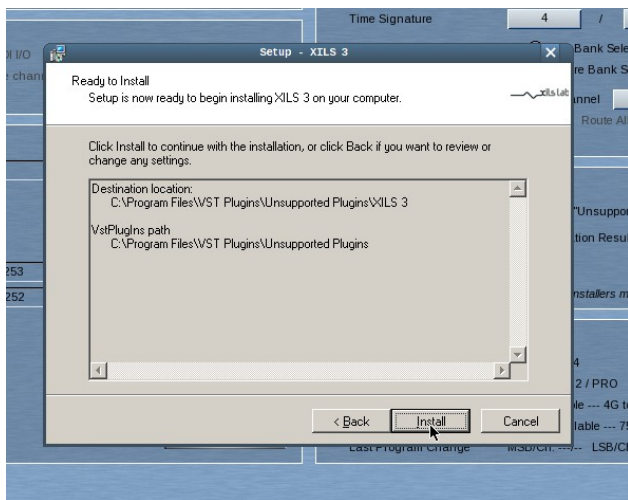


12. The install program may also choose the same folder as in step 10, but this is an incorrect choice. Only place the VST files in:



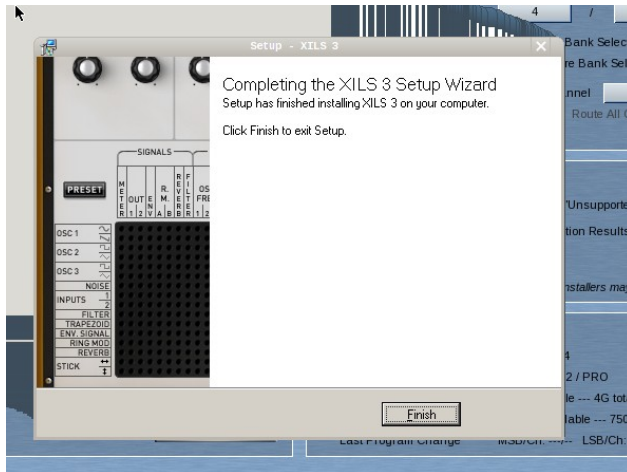
C:\Program Files\VST Plugins\Unsupported Plugins. Click “Next”.

13. One more page displays the locations of the files, as determined by the last two steps. If everything looks OK, click “Install”, otherwise use the “Back” button to go back and make suitable alterations to your choices.



14. Hopefully, the next dialog box will tell you that the plugin has installed correctly. All that remains to be done is click “Finish”, and then load up XILS3-LE into one of your Receptor 2 Pro channels, and enjoy the unique

sounds of this remarkable virtual instrument.



Please note that dialogue boxes may differ slightly in appearance to those shown.

PB 0/11/2010